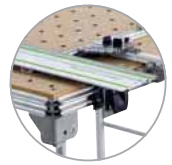


MFT/3 | The workbench has evolved

The MFT/3 is the perfect height to make work more comfortable. V-groove channels make squaring the miter gauge easier, more accurate and provides a mechanism for attaching accessories. The MFT/3 has many features like perforated tops, side channels for attaching clamps, and folding legs to allow two working heights, as well as easy transport. On the jobsite or in the workshop, use the MFT/3 as a supplemental work surface for sanding, jointing, clamping, or just about anything else.



Guide rail system
For use with TS plunge saws and OF routers; make cut-offs, angle cuts, and compound cuts. Use with a router for dados and flutes.



Many uses
Examples include sawing, routing, sanding, clamping, and assembly operations.



Grid hole pattern
Multiple holes in a uniform pattern are ideal for clamping operations and also reduces weight.



MFT/3 with full hardware kit shown. MFT/3-Basic is also available. See page 40 for details.

Flat and forgiving work surface

The perforated insert plate is flat and makes a great work surface. It is also replaceable.

Tool-less integration of the guide rail system

Quick and easy conversion of the work surface reduces space requirements.

Adjustable leg

One leg can be adjusted to accommodate uneven surfaces while keeping the table level.

Profiles

The V-groove profiles facilitate a range of clamping options, and provide the basis for joining multiple tables together.

Portable

The legs fold in for easy transportation, storage, or for using the table on the floor.

Stable and reliable work surface

Slip-resistant feet ensure a stable work platform through the elimination of table drift. Rigidity is enhanced with the addition of optional cross member supports.

MFT/3-Kapex | The perfect companion for the Kapex

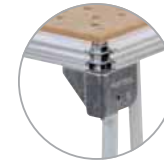
Though this basic, shorter version of the MFT/3 is engineered especially for use with the Kapex miter saw, it delivers the full versatility and features of the Festool multifunction table system. The perforated top is ideally suited for use with MFT clamping accessories, and the V-groove side rails are of the same profile as the full version of the MFT/3, allowing you to use many of the same system accessories.



Kapex stand
A specially-designed height and size for use with the Kapex sliding compound miter saw.



Portable
At only 42 lbs, it is easy to store and transport. Folding legs for two unique working positions.



Robust
Durable materials and high quality construction for long service life.



Flat and forgiving work surface

The insert plates are flat and make a great work surface. They are also replaceable.

Adjustable leg

One leg can be adjusted to accommodate uneven surfaces, while keeping the table level.

Slip-resistant feet

Helps to prevent table drift during usage and provides a layer of protection between the table legs and floor.

Large leg locks

Screw knobs release the legs for easy storage and transport. Knobs are large for easy grip and stand out from the leg to protect the hands when turning.

System integration

Works with Festool clamps and clamping elements to secure a work piece for routing, sanding, or sawing.

Grid hole pattern

Multiple holes in a uniform pattern are ideal for clamping operations.

- 01
- 02
- 03
- 04
- 05
- 06
- 07
- 08
- 10
- 11
- 12
- 13
- 14
- 15

Multifunction tables | Specifications



(Metric dimensions binding)

Model name	MFT/3	MFT/3-Basic	MFT/3-Kapex
Item	495 462	495 888	495 565
Standard package includes			
Guide rail supports (2x)	•		
Angle unit (protractor head)	•		
Fence rail	•		
Fence rail clamp	•		
Adjustable stop	•		
Guide rail FS 1080	•		
Specifications			
Table dimensions	45-9/16" x 30-7/16" [1157 x 773 mm]	45-9/16" x 30-7/16" [1157 x 773 mm]	34-7/32" x 22-7/8" [869 x 581 mm]
Work space	43-3/8" x 28-1/4" [1102 x 718 mm]	43-3/8" x 28-1/4" [1102 x 718 mm]	32-1/16" x 20-11/16" [814 X 526 mm]
Working height [folded down]	35-7/16" [7-3/32"] [900 mm [180 mm]]	35-7/16" [7-3/32"] [900 mm [180 mm]]	31-1/8" [7-3/32"] [790 mm [180 mm]]
Max. workpiece thickness (with FS Guide Rail)	3-1/16" [78 mm]		
Max. working width (with FS Guide Rail)	27-9/16" [700 mm]		
Weight	62 lbs [28 kg]		42 lbs [19 kg]
Price	\$575.00	\$475.00	\$390.00



Festool Tip: Use traditional screw clamps (see right page) in the MFT T-slots to securely hold the material to the table.

Multifunction tables | Accessories

Accessories that help you work faster, easier, smarter.

Festool offers a wide variety of MFT accessories. Maximize the workpiece holding potential of the MFT design by using Festool clamping accessories. Material can be fastened to the top using the uniform grid hole pattern on the perforated top. Utilizing the T-slot on the side rails, Festool clamp heads are formed to slide into the T-slots and fasten material at any point. The clamping elements provide lateral clamping force to materials fixed to the top.



No.	Description/Application	Compatibility		Item	Price
		MFT/3-Basic	MFT/3-Kapex		
1	Stop flag Included with the MFT/3 and fully adjustable for setting stop points for repeated cuts. Flip stop action folds out of the way when not being used.	•		495 542	\$41.00
2	Perforated top Durable MDF material serves as a spoil board on the MFT and is easily replaceable. Mounting is simplified with threaded inserts.				
	For the MFT/3 -Basic	•		495 543	\$134.00
	For the MFT/3 -Kapex		•	495 544	\$113.00
3	Cross members Attach to legs and frame of the MFT for additional stabilization of the table. (2 pieces)	•		495 502	\$75.50
4	MFT Connector Robust steel bars for connecting multiple MFT tables together. Adjustable set screws ensure solid and stable connection. (1 piece) [2 are needed]. Note: MFT/3 does not connect to MFT 1080 or MFT 800 tables.	•	•	484 455	\$14.50
5	Screw clamps Traditional screw clamp design with unique head to be used in the bottom continuous T-slot of the guide rails to securely clamp to material. (2 pieces)				
	Clamping thickness 4-11/16" [120 mm].	•	•	489 570	\$35.00
	Clamping thickness 11-13/16" [300 mm].	•	•	489 571	\$44.50
6	Quick clamp Ratcheting mechanism allow for easy lock and quick release and a secure grip on the material. Utilizes bottom T-slot of guide rail for limitless positioning. For use with FS guide rails and MFT. (1 piece)	•	•	491 594	\$38.00
7	Clamping elements Clamp material from the edges or sides using the grid hole pattern for uninterrupted surfaces. Works with square, round, or irregular shaped material. (2 pieces)	•	•	488 030	\$94.00